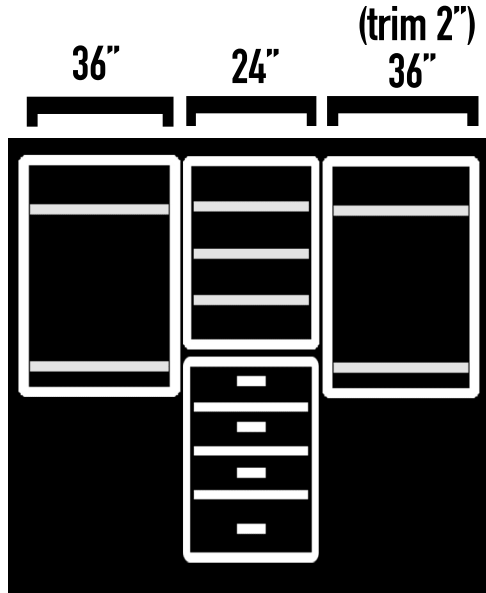


Option 1

**2x Double Hanging
1 Drawer Unit
1 Shelf Unit**

**note: trim 1 Double
Hanging 2"**

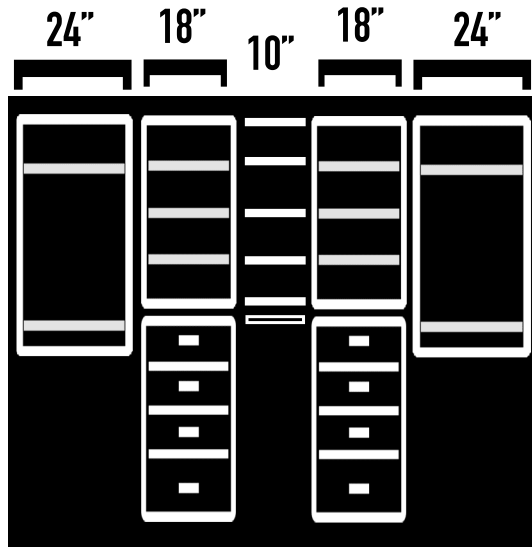


93 7/8"

Option 2

**2x Double Hanging
2x Drawer Units
2x Shelf Units
Straight Shelving
& Hanging Rod**

**note: trim Straight
Shelves & Extra Rod
down to 10"**



ME
MODULAR CLOSETS

DESIGN #366

Lindsay Dean

frillsanddrills@gmail.com